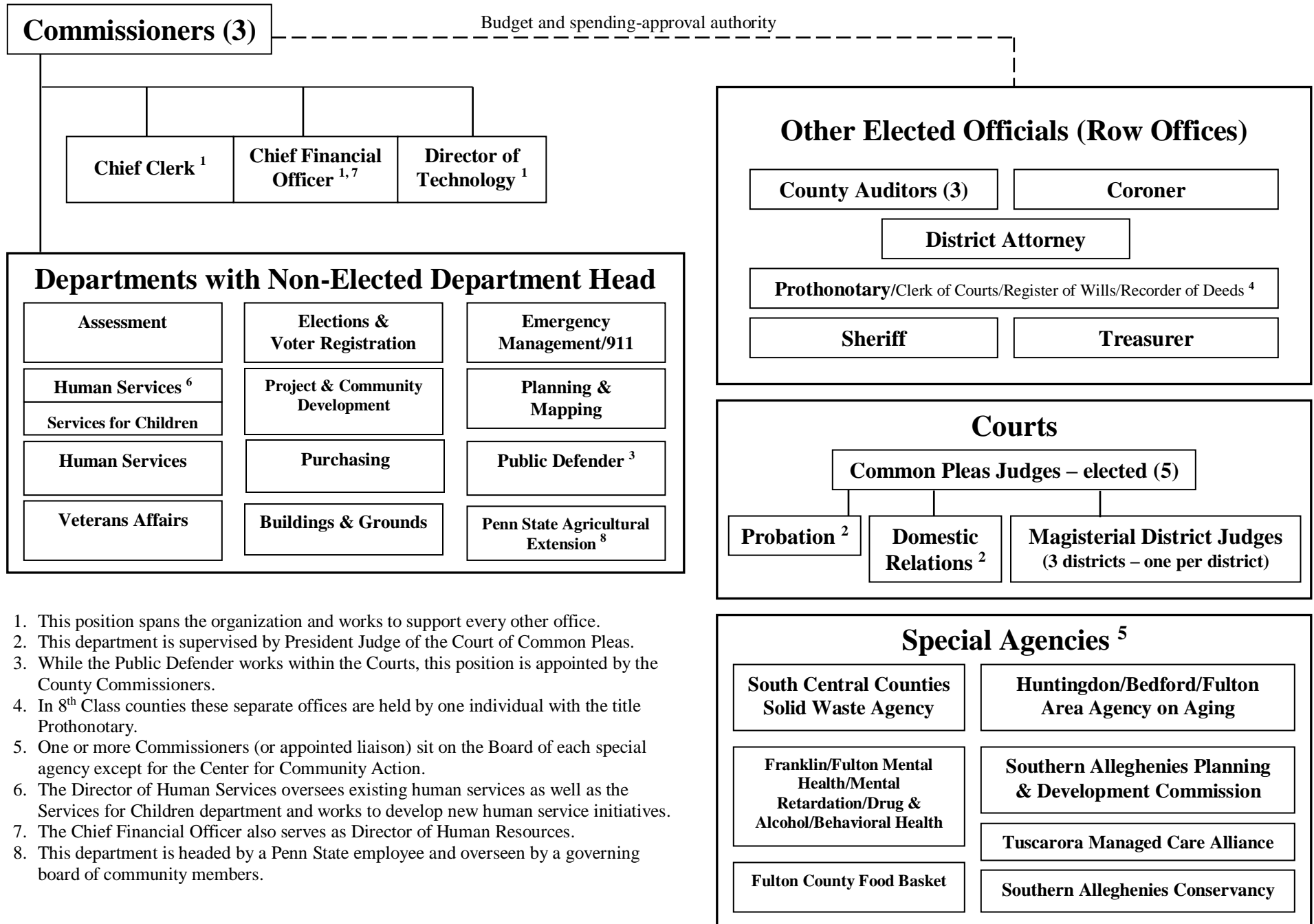


# Fulton County, Pennsylvania Government Organizational Chart

December 20, 2016



1. This position spans the organization and works to support every other office.
2. This department is supervised by President Judge of the Court of Common Pleas.
3. While the Public Defender works within the Courts, this position is appointed by the County Commissioners.
4. In 8<sup>th</sup> Class counties these separate offices are held by one individual with the title Prothonotary.
5. One or more Commissioners (or appointed liaison) sit on the Board of each special agency except for the Center for Community Action.
6. The Director of Human Services oversees existing human services as well as the Services for Children department and works to develop new human service initiatives.
7. The Chief Financial Officer also serves as Director of Human Resources.
8. This department is headed by a Penn State employee and overseen by a governing board of community members.