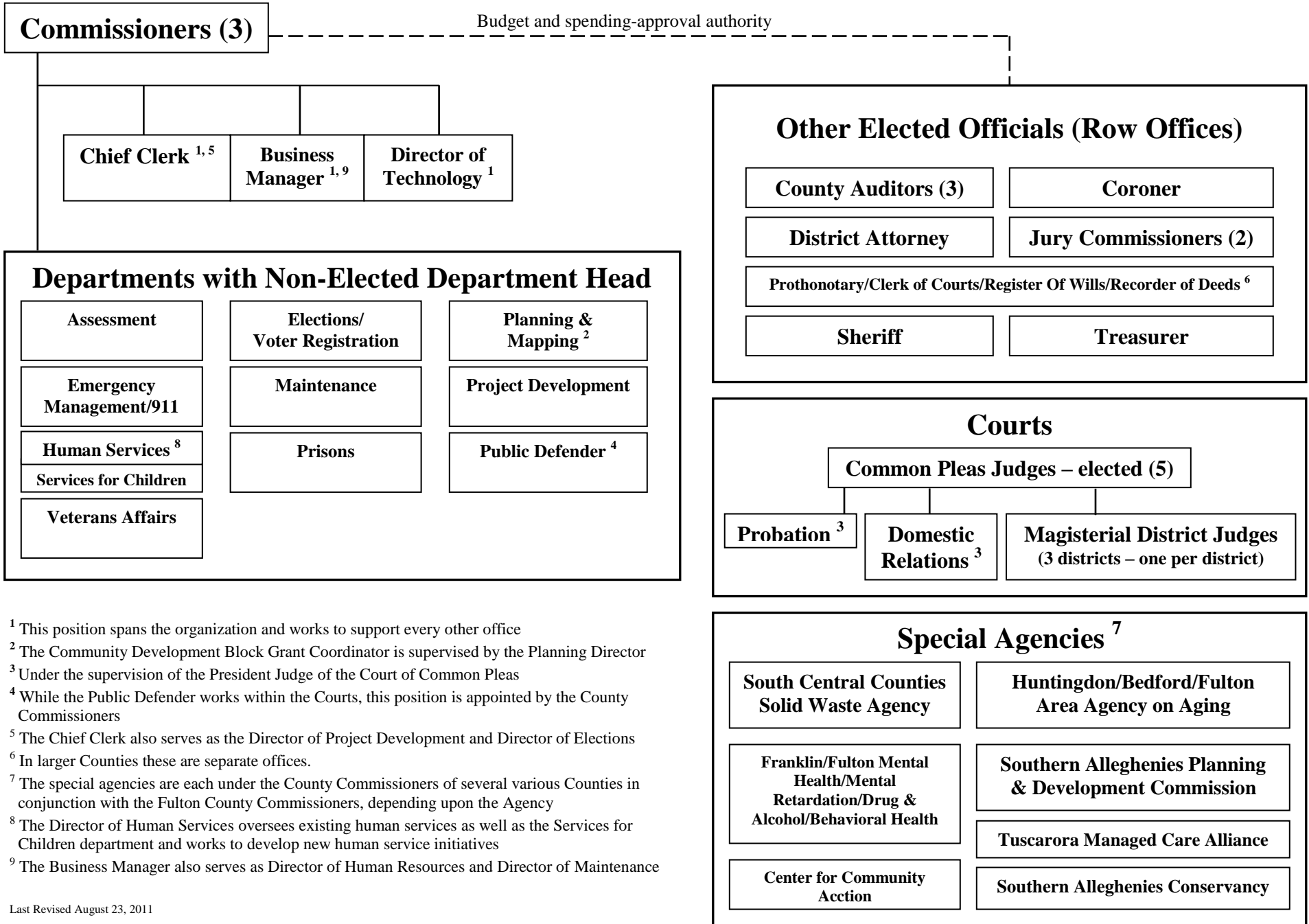


# Fulton County, Pennsylvania Government Organizational Chart



<sup>1</sup> This position spans the organization and works to support every other office  
<sup>2</sup> The Community Development Block Grant Coordinator is supervised by the Planning Director  
<sup>3</sup> Under the supervision of the President Judge of the Court of Common Pleas  
<sup>4</sup> While the Public Defender works within the Courts, this position is appointed by the County Commissioners  
<sup>5</sup> The Chief Clerk also serves as the Director of Project Development and Director of Elections  
<sup>6</sup> In larger Counties these are separate offices.  
<sup>7</sup> The special agencies are each under the County Commissioners of several various Counties in conjunction with the Fulton County Commissioners, depending upon the Agency  
<sup>8</sup> The Director of Human Services oversees existing human services as well as the Services for Children department and works to develop new human service initiatives  
<sup>9</sup> The Business Manager also serves as Director of Human Resources and Director of Maintenance